

## Cestita Batería

Miguel Milá. 2017  
Table Lamps



With this version, the lamp's features are enhanced with the help of technology. Keeping with the family's warmth and spirit, it features an opal glass shade supported by a beautiful cherry wood structure.

Cestita Batería is a lantern that creates a beautiful ambience anywhere; depicting Chinese shadows in the garden, or emanating light from any corner.

### General description:

Cherry wood structure. White opal glass or white opal polyethylene lampshade.

Lithium battery.

Switch incorporated into the luminaire with 3 intensity levels.

Range: 5h on high power / 12h on medium power / 24h on minimum power.

Includes charger.

Battery charging time: 6.5h

### Approximate weight (unpacked):

1,3 kg / 2.8 lb

### Technical information:

Light source included (dimnable)

LED Module

Rated input wattage: 2,5 W

Operating voltage: 2,9 VDC

CCT: 2.700 K

CRI: 90

Lifetime: 40.000 h

Luminous flux: 313 lm

Built-in dimmable LED.

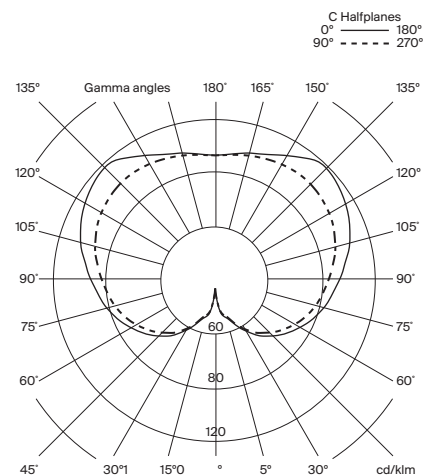
3 light output intensities.

Lamp suitable only for indoor use.

Always use this light source.

Input voltage: 100 ~ 240 Vac.

(50 Hz / 60 Hz). According to destination.



## Cestita Batería

Miguel Milá. 2017  
Table Lamps

### Regulations:

European version  
UNE-EN 60598  
UNE-EN 55015  
UNE-EN 60529

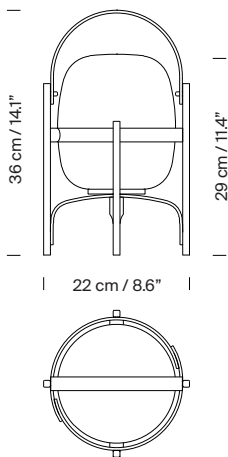
### Maintenance:

Clean with a smooth cloth. Do not use ammonia, solvents or abrasive cleaning products.  
To prevent degradation of the lamp, it should not be left outdoors permanently.

### Others:

The lamp is delivered in one package.  
The assembly instructions are delivered with the product.

### Model:



### Collection:

Table lamps



Cesta



Cestita



Cesta Batería



Cesta Metálica



Cestita Metálica

Pendant lamps



Globo Cesta



Globo Cestita



Wally Cesta



Wally Cestita



Cesta exterior



Cestita Alubat

Wall lamps (Outdoor)

Outdoor lamps